

Banyo station accessibility upgrade



PROJECT UPDATE – MAY 2024

The Banyo station accessibility upgrade is part of the State Government's ongoing investment to upgrade our stations to make them accessible for everyone.

About the project

Banyo station is being upgraded to make it more accessible, and easier for customers and the community to travel on our network.

The new, modern station will help people in wheelchairs, parents with prams and those travelling with luggage or who are injured, to access to our trains with ease.

Banyo station is expected to reopen in the second half of 2024.

Construction progress

The following works have been undertaken recently at Banyo:

- Demolition of platform structures
- Excavation - entrance plaza (St Vincent's Road)
- Associated Energex electrical works (footpath)
- Piling activities - foundations (platform, footbridge and lift shafts).

Upcoming works

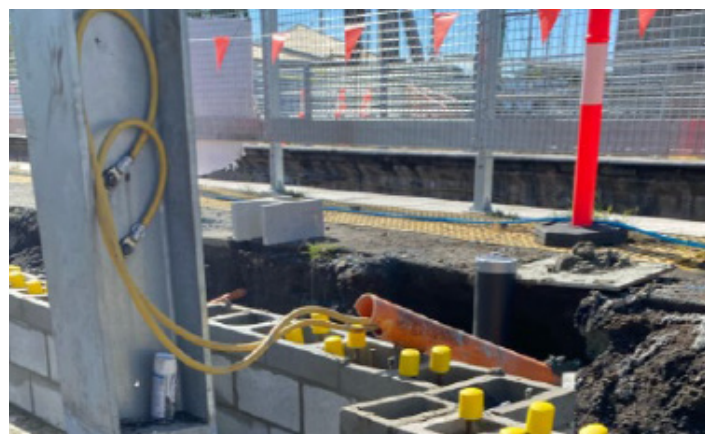
Customers and the local community can expect to see the following activities in the coming weeks:

- Continuing piling works - foundations (platforms, footbridge and lift infrastructure)
- Continuing platform works and commencement of coping stone installation (crane operation)
- Off-site manufacturing (footbridge, staircases).

Out of hours (night) works

- **Sunday 26 to Thursday 30 May, 8pm to 6am** the next day
- **Monday 3 to Wednesday 5 June, 8pm to 6am** the next day

Crane lifts, Energex electrical works (footpath), platform works, piling (foundation) activities, concrete pumping, truck movements, lighting.



Above: Detail of platform excavation and retaining wall.

Construction impacts

During construction, localised impacts may include:

- pedestrian detours and traffic changes for safety
- station precinct closed with reduced parking
- increased vehicle movements near works
- noise associated with construction activity.

Normal working hours are **6am to 6pm, Monday to Saturday**. Prior notification will be provided for after hours activities (nights, Sundays or public holidays).

Thank you for your patience and cooperation as we build a better Banyo station.

Planning your travel

With the station currently closed, an accessible shuttle bus route 316 operates between Banyo and Northgate stations, with stops at Tufnell Road, Australian Catholic University and Earnshaw State College. Plan your journey with the MyTranslink app, visit translink.com.au or call **13 12 30**.

Contact us

For more information, to provide feedback or to receive email updates, contact the project team:

- Phone: **1800 722 203** (free call)
- Email: stationsupgrade@qr.com.au
- Website: queenslandrail.com.au