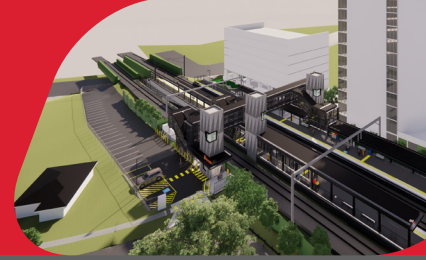


Buranda station accessibility upgrade



PROJECT UPDATE – AUGUST 2024

The Buranda station accessibility upgrade is part of the State Government's ongoing investment to upgrade stations to make them accessible for everyone.

About the project

Buranda station is being upgraded to make it more accessible, and easier for customers and the community to travel on our network.

The new, modern station will help people in wheelchairs, parents with prams and those travelling with luggage or who are injured, use the station with ease.

Project status

The following works have been carried out recently at Buranda station:

- completion of piling works for platform 2 retaining wall
- completion of installation of precast coping units to platforms
- installation of platform 2 lift shaft panels
- installation of precast footbridge columns on platform 1 and the new Arne Street Plaza entrance.

Upcoming works

Customers and the local community can expect to see the following activity in the coming weeks:

- ongoing in-ground services works on the platforms
- ongoing construction of concrete substructure works for the new lifts, footbridge and shelters
- installation of footbridge, stairs and awnings on platforms.

Works will generally take place between **6am and 6pm Monday to Saturday**, unless notified.

Every effort will be made to carry out these works with respect for our neighbours and customers.

Community photo competition winner announced

Congratulations to Eleonora Deak whose photo titled 'Modern Buranda' was selected as the image to be mounted in pride of place at Buranda station when the station reopens. Images of the local community add a vibrant touch to our community spaces.

Thank you to all the entrants who submitted photos.



Installation of lift shaft panels



Installation of platform copes



Modern Buranda - photo by Eleonora Deak

Contact us

- Phone: [1800 722 203](tel:1800722203) (free call)
- Email: stationsupgrade@qr.com.au
- Website: queenslandrail.com.au