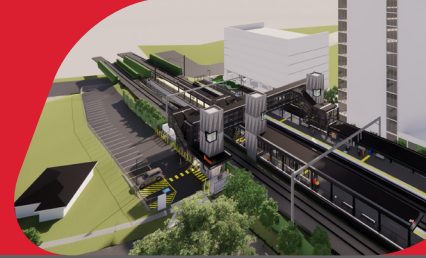




Buranda station accessibility upgrade



PROJECT UPDATE – DECEMBER 2024

The Buranda station accessibility upgrade is part of Queensland Rail's ongoing investment to upgrade stations to make them accessible for everyone.

About the project

Buranda station is being upgraded to make it more accessible, and easier for customers and the community to travel on our network.

The new, modern station will help people in wheelchairs, parents with prams and those travelling with luggage or who are injured, use the station with ease.

Project status

Weekend track closures on 9 and 10, and 23 and 24 November allowed the project team to make good progress on the installation of some oversized station components, including:

- installation of footbridge segments
- installation of stairs
- installation of platform awnings and steel
- removal of existing overhead electrical masts.

Platform concrete pours have been ongoing as well as the painting of platform copes.

Upcoming works

The project team will take a break over the holiday period from Friday 20 December and works will resume on site from Monday 6 January 2025.

Before then you can expect to see the following works on site:

- installation of further awning steel and roofing on platforms
- installation of stairs from Arne Street and on platform 2
- preparation for and pouring of concrete for retaining walls.

We wish to thank the community for your ongoing patience and understanding while we work to build you a better station.

Contact us

- Phone: **1800 722 203** (free call)
- Email: stationsupgrade@qr.com.au
- Website: queenslandrail.com.au



Installation of footbridge supports - 9 November



Installation of footbridge and stairs - 24 November



Installation of platform awning steel - 24 November