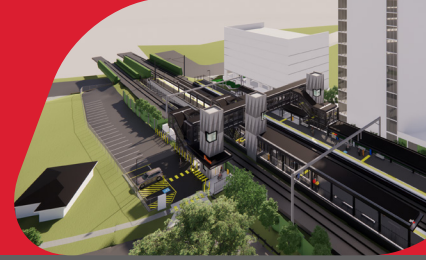


Buranda station accessibility upgrade



PROJECT UPDATE – FEBRUARY 2025

The Buranda station accessibility upgrade is part of Queensland Rail's ongoing investment to upgrade stations to make them accessible for everyone.

About the project

Buranda station is being upgraded to make it more accessible, and easier for customers and the community to travel on our network.

The new, modern station will help people in wheelchairs, parents with prams and those travelling with luggage or who are injured, use the station with ease.

Project status

Works onsite have been progressing well with a more settled weather pattern so far this year. Progress this month includes:

- 90% of platform 2 slab pours are complete
- roof installation on platform 1 is complete; platform 2 roof installation is progressing
- fitout of screens, water services, electrical and communication services within the footbridge and stairs
- refurbishment of the station building has begun.



Platform 2 awning structural steel

Upcoming works

The following works will be progressed over the coming month:

- platform 1 and 2 - installation of awning, roofing, services, and lift installation preparation
- Arne Street carpark - drainage and service installation, lift installation preparation
- Gillingham Street entrance - installation of in-ground services including drainage, sewer and water. Retaining walls and stair structures, and lift 2 installation commencing.

Works will generally take place between **6am and 6pm Monday to Saturday**, unless notified.

Every effort will be made to carry out these works with respect for our neighbours and customers.

Contact us

- Phone: [1800 722 203](tel:1800722203) (free call)
- Email: stationsupgrade@qr.com.au
- Website: queenslandrail.com.au



Gillingham Street station entrance

Upcoming after hours works

- 6am Saturday 1 to 6pm Sunday 2 March during a planned closure of the Cleveland line.