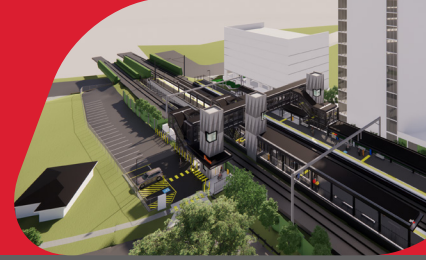


Buranda station accessibility upgrade



PROJECT UPDATE – JANUARY 2025

The Buranda station accessibility upgrade is part of Queensland Rail's ongoing investment to upgrade stations to make them accessible for everyone.

About the project

Buranda station is being upgraded to make it more accessible, and easier for customers and the community to travel on our network.

The new, modern station will help people in wheelchairs, parents with prams and those travelling with luggage or who are injured, use the station with ease.

Project status

Work recommenced on-site on Monday 6 January and the team is progressing towards the following milestones:

- installation and fit-out of the lift cars
- platform 2 concrete slab and beam pours
- installation of station services and pathways
- fit-out of footbridge and stairs.



Platform 2 footbridge and stairs

Upcoming works

The following works will be completed over the coming month:

- installation of further awning steel and roofing on platforms
- preparation for platform 2 slab pours, stormwater, services and pits.

Works will generally take place between **6am and 6pm Monday to Saturday**, unless notified.

Every effort will be made to carry out these works with respect for our neighbours and customers.

Contact us

- Phone: **1800 722 203** (free call)
- Email: stationsupgrade@qr.com.au
- Website: queenslandrail.com.au



Platform 1 concrete slab and awning roof sheeting

Upcoming after hours works

- Saturday 22 and Sunday 23 February during a planned closure of the inner city lines.
- Monday 24 and Tuesday 25 February night works.
- Saturday 1 and Sunday 2 March during a planned closure of the Cleveland line.

Further information will be provided closer to the time.