

Works Notice

Burpengary



Why?

Queensland Rail will be removing the construction site compound at Burpengary station. This will require a crane and there will be increased truck movements.



When?

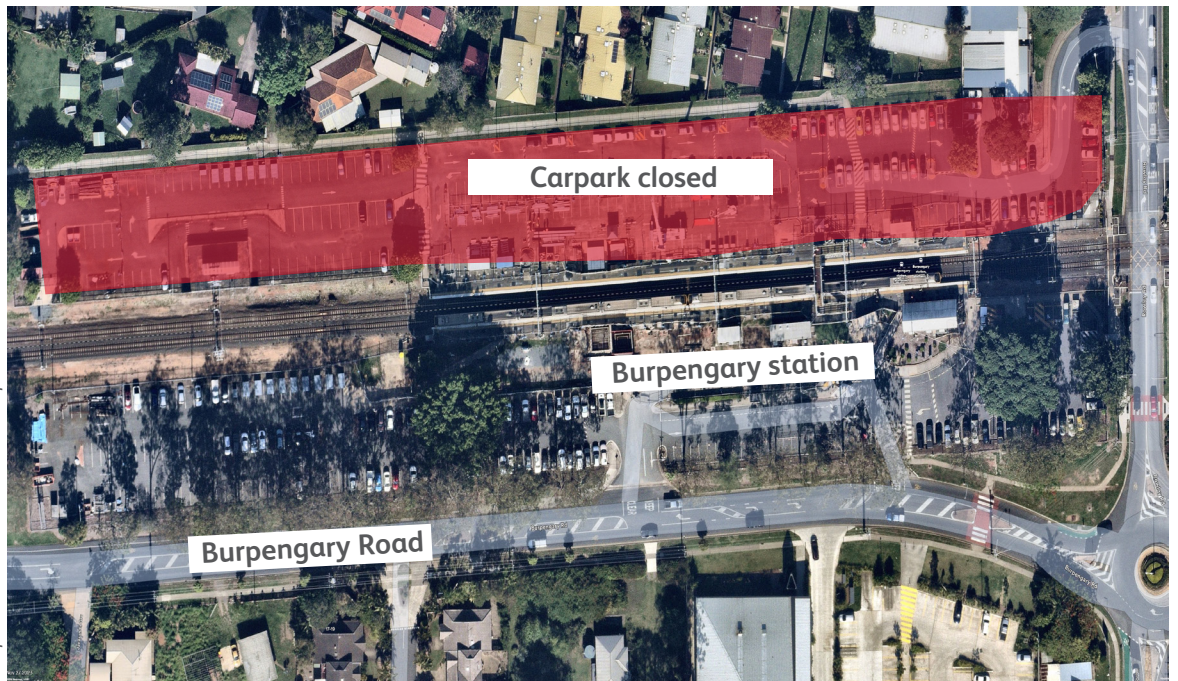
Works will occur from 4am to 2pm on Saturday 7 December 2024.



Where?

Works will take place in the carpark areas on the Bantry Avenue side of the station. This carpark will be closed during works to facilitate the movement of crane and trucks.

Access to platform 2 will be maintained during this time.



Impacts



Machinery and construction noises



Extra vehicle movements



Crane operation



Weekend works

Every effort will be made to carry out these works with respect for our valued neighbours. We apologise for any inconvenience and thank you for your patience as we work to improve our network.

Works may be subject to change due to weather conditions and operational requirements.

If you would like to receive electronic copies of our works notices, please sign up at queenslandrail.com.au/EmailNotification

For more information, call [1800 722 203](tel:1800722203) (free call) or email stationsupgrade@qr.com.

