

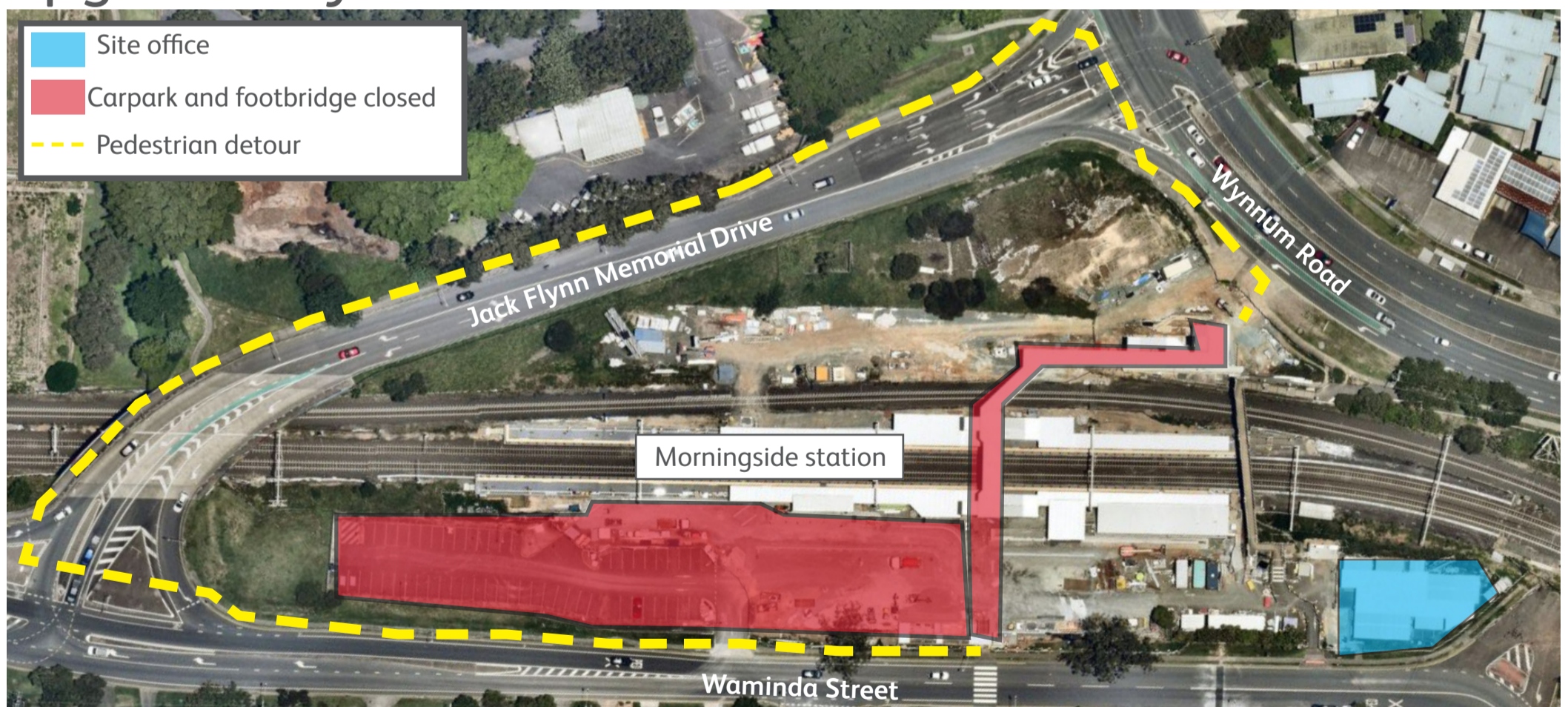
Morningside station

Temporary footbridge and carpark closure

On Saturday 22 and Sunday 23 February, and Saturday 1 and Sunday 2 March, Morningside station footbridge and carpark will be temporarily closed to facilitate station upgrade works during planned track closures on the Cleveland line.

For access between Wynnum Road and Waminda Street, please follow the detour as indicated below via Jack Flynn Memorial Drive.

We appreciate your patience while we finalise the upgrade of your station.



For more information, please contact the project team on free call [1800 722 203](tel:1800722203) or email stationsupgrade@qr.com.au