

Morningside station

Temporary footbridge closure

November 2024

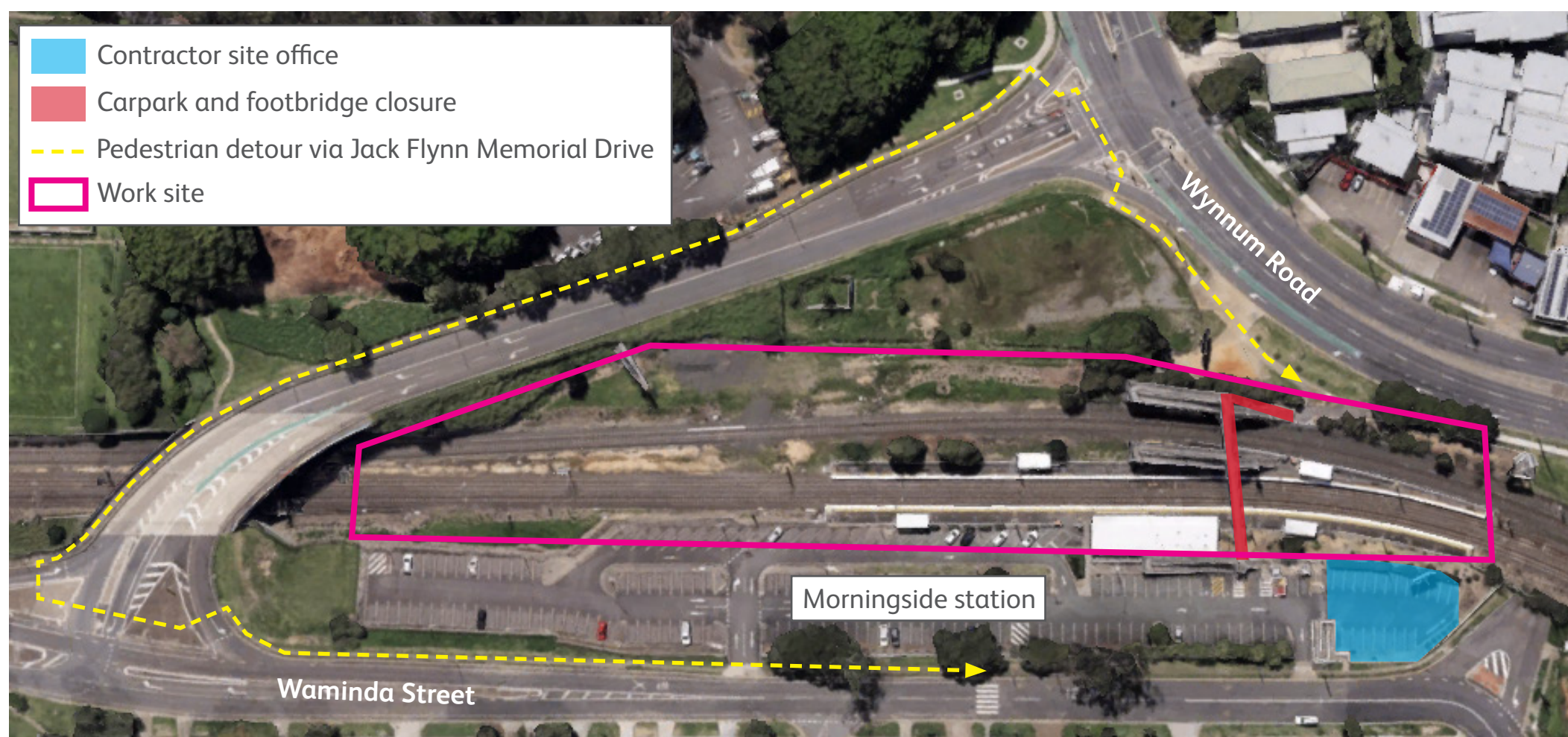
Morningside station footbridge will be temporarily closed to facilitate major station upgrade works during planned track closures in November.

The footbridge will be closed from 6am Saturday to 6pm Sunday on:

- Saturday 9 and Sunday 10 November
- Saturday 23 and Sunday 24 November.

For access between Wynnum Road and Waminda Street, please follow the detour as indicated below via Jack Flynn Memorial Drive.

We appreciate your patience while we work towards building you a better station.



For more information, please contact the project team on free call [1800 722 203](tel:1800722203) or email stationsupgrade@qr.com.au